




**Quality Products Since 1968**

Manufactured by:

**Helm Welding (1983) Limited**

### **Four Auger TMR Mixer Feeders "C & S Series"**

*Our "C & S Series" of mixers are gradually being phased out and replaced by our "FEEDPro Series" of mixers. We will continue making "C & S" mixers while we have components available. Before ordering, contact  directly to ensure availability.*

#### Standard Features

- Four auger mixing system
- Large diameter augers with flighting thicknesses ranging from 3/8" to 1/2"
- Large diameter heavy wall auger tubes for extra strength to do the tough mixing jobs
- Bottom shear angle for the harder-to-mix rations
- Full 1/4" steel bottom plus liner
- All "C & S Series" mixers come complete with either of several makes of basic read up, read down electronic scale systems

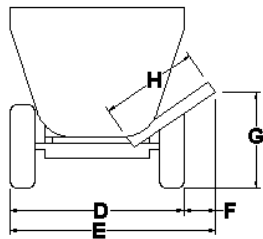
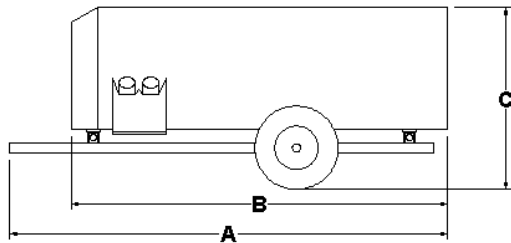
#### Options

- Choice of various different electronic scale indicators
- Remote indicator and remote zeroing capabilities
- Hydraulic raise and lower discharge chute
- Special discharge lengths
- Hydraulic flap on discharge chute
- Manual flap on discharge chute
- Magnet in discharge flap
- Diverter valve for tractors with only one set of remotes
- External grease bank
- Safety grid (standard on all stationary mixers)
- Stainless steel liners
- Battery box

## “C & S Series” Trailer Model Specification Table

MODEL SIZE	200	220	285
A – Overall Length	194	194	206
B - Min. Less Hitch	151	153	165
C – Overall Height - standard	76	82	88
- special	-	90	96
D – Outside Tread Width	76	82	82
E – Outside Tread to Discharge	89 – 93	92 - 96	92 – 96
F – Tread to Discharge	15 – 19	19 – 23	19 – 23
G – Discharge Height	25 – 35	30 - 42	30 - 42
H – Discharge Length	30	36	36
Hopper Size	78 x 120	78 x 120	84 x 132
Bottom Augers – tube	5 x 1/2	5 x 1/2	5 x 1/2
- flighting	3/8	3/8 & 1/2	3/8 & 1/2
- diameter	20	20	20
Top Augers – tube	4 1/2 x 3/8	4 1/2 x 3/8	4 1/2 x 3/8
- flighting	3/8	3/8	3/8
- diameter	20	20	20
Shaft Diameter – drive bottom	3	3	3
- drive top	2 1/2	2 1/2	2 1/2
Tire Sizes - standard	11L x 15	Used 20”	Used 20”
- hubs	8 bolt	8 bolt	8 bolt
Scale System	3 point	4 point	4 point
Roller Chains	80 - 120	80 - 120	80 – 120
Approximate Weight (lbs.)	7,100	8,500	9,050
Mixing Capacity (cubic ft.)	205	220	285

Unless otherwise indicated, all dimensions are in inches with standard equipment installed.  
 Specifications subject to change without notice.  
 Certain features shown may be optional.



ALL “C & S Series” MODELS	
Hopper Bottom	1/4 plus 1/4 liner*
Hopper Ends - bottom	1/4
- top	10 gauge
Hopper Sides - bottom	1/4
- top	10 gauge or 3/16

\* Or

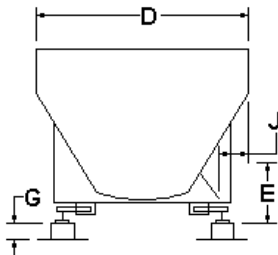
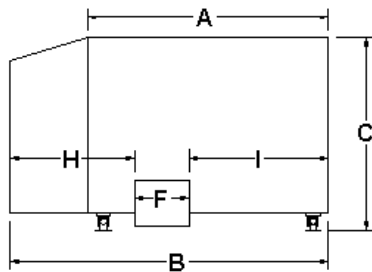
optional stainless steel

## “C & S Series” Stationary Model Specification Table

MODEL SIZE	220	285
A - Hopper Length	120	132
B – Overall Length	170	182
C – Overall Height – less stand	61	67
D – Width	80	86
E – Floor to Door – with stand	12 – 19	12 – 19
F – Door Opening Width	19	19
G – Stand Height	12	12
H – Door to Front*	59	59
I – Door to Rear*	88	100
J – Door to Mixer Side	9 ½ - 16 ½	9 ½ - 16 ½
Hopper Size	78 x 120	84 x 132
Bottom Augers – tube	5 x ½	5 x ½
- flighting	3/8 & ½	3/8 & ½
- diameter	20	20
Top Augers - tube	4 ½ x 3/8	4 ½ x 3/8
- flighting	3/8	3/8
- diameter	20	20
Scale System	4 Point	4 Point
Roller Chains	80 - 120	80 - 120
Approximate Weight (lbs.)	8,000	9,050
Mixing Capacity (cubic ft.)	220	285

\* Front being drive end (plus opener)

Unless otherwise indicated, all dimensions are in inches with standard equipment installed.  
Specifications subject to change without notice.  
Certain features shown may be optional.



ALL “C & S Series” MODELS	
Hopper Bottom	¼ plus ¼ liner*
Hopper Ends - bottom	¼
- top	10 gauge
Hopper Sides - bottom	¼
- top	10 gauge or 3/16

\* Or optional stainless steel

Manufactured By:  
Helm Welding (1983) Limited  
Lucknow, Ontario, Canada

P: 519-529-7000  
F: 519-529-3260  
[www.lucknowproducts.com](http://www.lucknowproducts.com)