



**Quality Products Since 1968**

Manufactured by:

**Helm Welding (1983) Limited**

**Four Auger TMR Mixer Feeders  
"FEEDPro Series"**

Our new "FEEDPro Series" of mixers have been created to replace our "C & S Series" which are gradually being phased out.

Standard Features

- Four auger mixing system
- Slip clutch style PTO shaft
- Large diameter augers with flighting thicknesses ranging from 3/8" to 1/2"
- Large diameter heavy wall auger tubes for extra strength to do the tough mixing jobs
- External grease banks
- Rear oil bath drive compartment lets all chains and sprockets run in oil
- Planetary gear reduction to add simplicity and reduce input H.P. requirements
- Bottom shear angle for the harder-to-mix rations
- Full 1/4" steel bottom plus liner
- All "FEEDPro Series" mixers come complete with either of several makes of basic read up, read down electronic scale systems

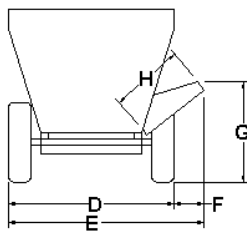
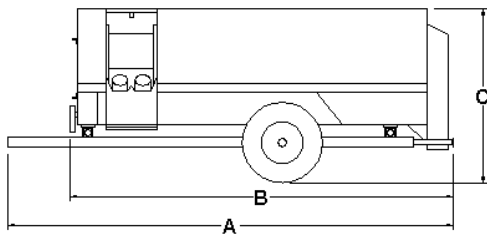
Options

- Choice of various different electronic scale indicators
- Remote indicator and remote zeroing capabilities
- Hydraulic raise and lower discharge chute
- Special discharge lengths
- Hydraulic flap on discharge chute
- Manual flap on discharge chute
- Magnet in discharge flap
- Diverter valve for tractors with only one set of remotes
- External grease bank
- Safety grid (standard on all stationary mixers)
- Stainless steel liners
- Battery box
- Light bar kit

## “FEEDPro Series” Trailer Model Specification Table

MODEL SIZE	260	310	360
A – Overall Length	190	214	238
B – Min. Less Hitch	148	172	196
C – Overall Height	87	87	90
D – Tread Width	81	81	81
E – Outside Tread to Discharge	99 – 102	99 – 102	100 1/2 – 104 1/2
F – Tread to Discharge	18 – 21	18 – 21	19 – 23
G – Discharge Height	26 – 42	26 – 42	30 – 48
Hopper Size	84 x 120	84 x 144	84 x 168
H – Discharge Length	36	36	42
Bottom Augers			
- tube	5 x 1/2	5 x 1/2	6 5/8 x 1/2
- flighting	3/8 & 1/2	3/8 & 1/2	3/8 & 1/2
- diameter	20	20	20
Top Augers			
- tube	4 1/2 x 3/8	4 1/2 x 3/8	5 x 1/2
- flighting	3/8	3/8	3/8
- diameter	20	20	20
Shaft Diameter			
- drive bottom	3	3	3
- drive top	2 1/2	2 1/2	2 1/2
Tire Sizes	11 or 12R 22.5	11 or 12R 22.5	425/65R 22.5
Tire Hubs	8 - bolt	8 - bolt	8 - bolt
Scale System	4 point	4 point	4 point
Roller Chains	80 - 120	80 - 120	80H – 120
Approx. Weight (lbs.)	8,600	9,750	11,150
Approx. Tongue Weight (lbs.)	750	750	825
Mixing Cap. (cu. ft.)	260	310	360

Unless otherwise indicated, all dimensions are in inches with standard equipment installed.  
 Specifications subject to change without notice.  
 Certain features shown may be optional.

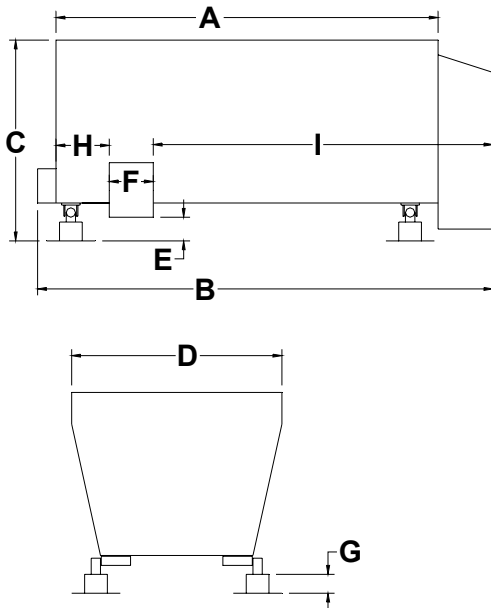


ALL “FEEDPro Series” MODELS	
Hopper Bottom	1/4 plus 1/4 liner
Hopper Ends - bottom	1/4
- top	10 gauge
Hopper Sides - bottom	1/4
- top	10 gauge

## “FEEDPro Series” Stationary Model Specification Table

MODEL SIZE	150	185	260	310	360
A - Hopper Length	84	96	120	144	168
B – Overall Length	102	114	148	172	196
C – Overall Height	72	72	80	80	80
D – Width	74	74	84	84	84
E – Floor to Door	19 1/2-31 1/2	19 1/2-31 1/2	12	12	12
F – Door Opening Width	19	19	24	24	24
G – Stand Height	10	10	8	8	8
H – Door to Front	16	16	18	18	18
I – Door to Rear	64	76	102	126	150
Hopper Size	72 x 84	72 x 96	84 x 120	84 x 144	84 x 168
Bottom Augers					
- tube	4 1/2 x 3/8	4 1/2 x 3/8	5 x 1/2	5 x 1/2	6 5/8 x 1/2
- flighting	1/2	1/2	3/8 & 1/2	3/8 & 1/2	3/8 & 1/2
- diameter	18	18	20	20	20
Top Augers					
- tube	4 x 5/16	4 x 5/16	4 1/2 x 3/8	4 1/2 x 3/8	5 x 1/2
- flighting	3/8	3/8	3/8	3/8	3/8
- diameter	18	18	20	20	20
Shaft Diameter					
- drive bottom	2 1/2	2 1/2	3	3	3
- drive top	1 3/4	1 3/4	2 1/2	2 1/2	2 1/2
Scale System	4 point	4 point	4 point	4 point	4 point
Roller Chains	80	80	80 - 120	80 - 120	80H – 120
Approx. Weight (lbs.)	3,300	3,600	8,600	9,750	11,150
Mixing Cap. (cu. ft.)	150	185	260	310	360

Unless otherwise indicated, all dimensions are in inches with standard equipment installed.  
 Specifications subject to change without notice.  
 Certain features shown may be optional.



ALL “FEEDPro Series” MODELS	
Hopper Bottom	1/4 plus 1/4 liner
Hopper Ends - bottom	1/4
- top	10 gauge
Hopper Sides - bottom	1/4
- top	10 gauge

Manufactured By:  
 Helm Welding (1983) Limited  
 Lucknow, Ontario, Canada

P: 519-529-7000  
 F: 519-529-3260  
[www.lucknowproducts.com](http://www.lucknowproducts.com)