



**Quality Products Since 1968**

Manufactured by:

**Helm Welding (1983) Limited**

### **Four Auger TMR Mixer Feeders "P Series"**

#### Standard Features

- Four auger mixing system
- Large diameter augers with flighting thicknesses ranging from 3/8" to 3/4"
- Large diameter heavy wall auger tubes for extra strength to do the tough mixing jobs
- Bottom shear angle for the harder-to-mix rations
- Heavy duty SFCW flanged block bearings on the drive end of all augers, equipped with special seals and covers, provide for years of trouble-free operation
- External grease banks
- Rear oil bath drive compartment lets all chains and sprockets run in oil
- Planetary gear reduction to add simplicity and reduce input H.P. requirements
- All sprockets on the main drive system equipped with S-taper hubs for ease of maintenance
- Rear bumper for added protection against damage
- All "P" series mixer feeders come complete with either of several makes of basic read up, read down electronic scale systems

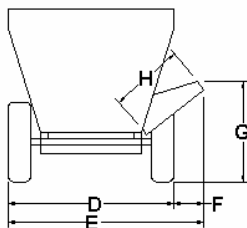
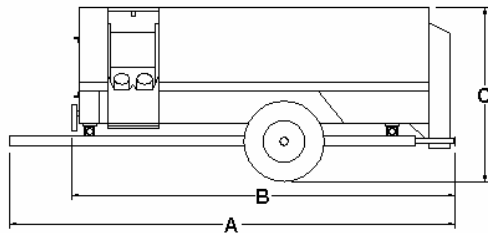
#### Options

- Choice of various different electronic scale indicators
- Remote indicator and remote zeroing capabilities
- Hydraulic raise and lower discharge chute
- Special discharge lengths
- Hydraulic flap on discharge chute
- Manual flap on discharge chute
- Magnet in discharge flap
- Stainless steel liners
- Diverter valve for tractors with only one set of remotes

## “P Series” Trailer Model Specification Table

MODEL SIZE	300	350	425	475	525	575	750	900
A – Overall Length	208	220	244	268	248	272	272	320
B – Min. Less Hitch	160	177	202	226	206	230	230	278
C – Overall Height	98	98	100	100	112	112	118	122
D – Tread Width	92	92	94	94	106	106	106	101
E – Min. – Max.	106 - 111	106 - 111	118 - 124	118 - 124	121 - 127	121 - 127	121 - 127	121 - 127
F – Min. – Max.	14 - 19	14 - 19	18 - 24	18 - 24	18 - 24	18 - 24	18 - 24	18 - 24
G – Min. – Max.	30 - 48	30 - 48	30 - 48	30 - 48	30 - 48	30 - 48	30 - 48	30 - 48
Hopper Size	84 x 132	84 x 144	84 x 168	84 x 192	87 x 168	87 x 192	96 x 192	96 x 240
H – Discharge Length	36	36	42	42	42	42	42	42
Bottom Augers								
- tube	6 5/8 x 1/2	6 5/8 x 1/2	8 5/8 x 1/2	8 5/8 x 1/2	8 5/8 x 1/2	8 5/8 x 1/2	8 5/8 x 1/2	10 3/4 x 1/2
- flighting	1/2 & 5/8	1/2 & 5/8	1/2 & 5/8	1/2 & 5/8	1/2 & 5/8	1/2 & 5/8	1/2 & 5/8	3/4
- diameter	24	24	24	24	30	30	30	30
Top Augers								
- tube	5 x 1/2	5 x 1/2	6 5/8 x 1/2	6 5/8 x 1/2	6 5/8 x 1/2	6 5/8 x 1/2	6 5/8 x 1/2	8 5/8 x 1/2
- flighting	3/8	3/8	3/8	3/8	3/8	3/8	3/8	1/2
- diameter	24	24	24	24	28	28	28	30
Shaft Diameter								
- drive bottom	3 7/16	3 7/16	3 15/16	3 15/16	3 15/16	3 15/16	3 15/16	3 15/16
- drive top	3	3	3	3	3	3	3 7/16	3 7/16
Bearings Drive	SFCW	SFCW	SFCW	SFCW	SFCW	SFCW	SFCW	SFCW
Sprockets Drive	S Taper	S Taper	S Taper	S Taper	S Taper	S Taper	S Taper	S Taper
Scale System	4 point	4 point	4 point	4 point	4 point	4 point	4 point	4 point
Roller Chains	80 - 120	80 - 120	100 - 140	100 - 140	100 - 160	100 - 160	100 - 160	120 - 160
Approx. Weight (lbs.)	11,900	12,800	14,000	15,200	18,000	20,940	23,500	26,540
Mixing Cap. (cu. ft.)	310	350	440	500	550	625	750	900

Unless otherwise indicated, all dimensions are in inches with standard equipment installed.  
 Specifications subject to change without notice.  
 Certain features shown may be optional.

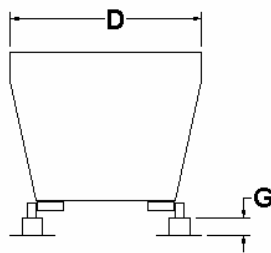
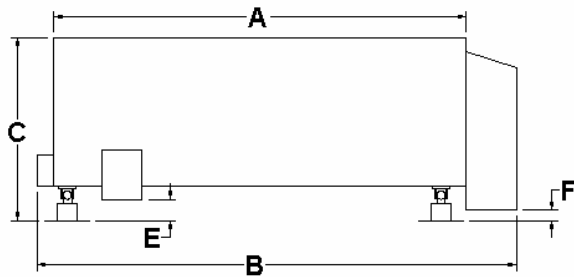


ALL “P Series” MODELS	
Hopper Bottom – (thickness)	1/4 double
Hopper Ends - bottom	1/4
- top	10 gauge
Hopper Sides - bottom	1/4
- top	10 gauge

## "P Series" Stationary Model Specification Table

MODEL SIZE	300	350	425	475	525	575	750
A - Hopper Length	132	144	168	192	168	192	192
B - Overall Length	158	175	199	223	204	228	230
C - Overall Height	85	85	85	85	94	94	100
D - Width	89	89	89	89	92	92	101
E - Floor to Door	10	10	10	10	10	10	10
F - Oil Drain Clear.	5	5	5	5	5	5	5
G - Stand Height	8	8	8	8	8	8	8
Hopper Size	84 x 132	84 x 144	84 x 168	84 x 192	87 x 168	87 x 192	96 x 192
Bottom Augers							
- tube	6 5/8 x 1/2	6 5/8 x 1/2	8 5/8 x 1/2	8 5/8 x 1/2	8 5/8 x 1/2	8 5/8 x 1/2	8 5/8 x 1/2
- flighting	1/2 & 5/8	1/2 & 5/8	1/2 & 5/8	1/2 & 5/8	1/2 & 5/8	1/2 & 5/8	1/2 & 5/8
- diameter	24	24	24	24	30	30	30
Top Augers							
- tube	5 x 1/2	5 x 1/2	6 5/8 x 1/2	6 5/8 x 1/2	6 5/8 x 1/2	6 5/8 x 1/2	6 5/8 x 1/2
- flighting	3/8	3/8	3/8	3/8	3/8	3/8	3/8
- diameter	24	24	24	24	28	28	28
Scale System	4 Point	4 Point	4 Point	4 Point	4 Point	4 Point	4 Point
Roller Chains	80 - 120	80 - 120	100 - 140	100 - 140	100 - 160	100 - 160	100-160
Approx. Weight (lbs.)	11,900	12,800	14,000	15,200	18,000	20,940	21,500
Mixing Cap. (cu. ft.)	310	350	440	500	550	625	750

Unless otherwise indicated, all dimensions are in inches with standard equipment installed.  
 Specifications subject to change without notice.  
 Certain features shown may be optional.



ALL "P Series" MODELS	
Hopper Bottom - (thickness)	1/4 double
Hopper Ends - bottom	1/4
- top	10 gauge
Hopper Sides - bottom	1/4
- top	10 gauge



**Quality Products Since 1968**

Manufactured by:

**Helm Welding (1983) Limited**

**Four Auger TMR Mixer Feeders  
“P Series” Truck Mount Models**

LUCK NOW truck mounted mixers are designed to fit the farmer's special needs. All planetary models are available in either P.T.O. or hydrostatic drives. Contact your local dealer or LUCK NOW directly for special requirements and pricing on a proven, well manufactured LUCK NOW truck mount mixer.

**Standard Features:**

All “P” Series Mixer Feeders have these standard equipment features:

- Four auger mixing system
- Large diameter augers with 5/8” and 3/8” thick flighting (3/4” on 900 model)
- Large diameter heavy wall auger tubes for extra strength to do the tough mixing jobs
- Bottom shear angle for the harder-to-mix rations
- Heavy duty SFCW flanged block bearings on the drive end of all augers, equipped with special seals and covers, provide for years of trouble-free operation
- 3 auger discharge on models 475, 575, 750 & 900
- External grease banks
- Rear oil bath drive compartment lets all chains and sprockets run in oil
- Planetary gear reduction to add simplicity and reduce input H.P. requirements
- All sprockets on the main drive system equipped with S-Taper hubs for ease of maintenance
- All come complete with either of several makes of basic read up, read down electronic scale systems

**Options:**

- Choice of various different electronic scale indicators
- Remote indicator and remote zeroing capabilities
- Hydraulic raise and lower discharge chute
- Special discharge lengths
- Hydraulic flap on discharge chute
- Manual flap on discharge chute
- Magnet in discharge flap
- Stainless steel liner and augers
- Many other options available upon request

## “P Series” Truck Mount Specification Table

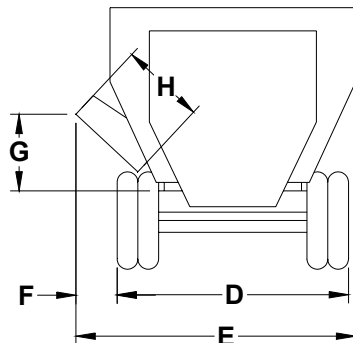
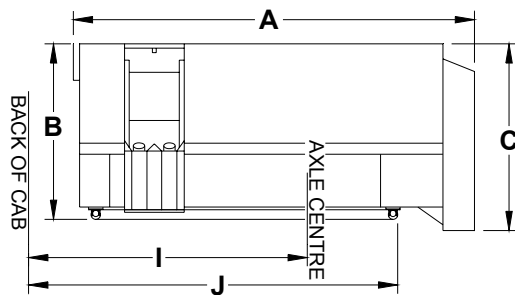
	300	350	425	475	525	575	750	900
A – Overall Length	154 1/2	166 1/2	195 1/2	219 1/2	195 1/2	219 1/2	219 1/2	267 1/2
B – Mixer Height	72 1/2	72 1/2	72 1/2	72 1/2	81 1/2	81 1/2	87 1/2	87 1/2
C – Overall Height	77 1/2	77 1/2	79	79	90	90	96	96
D – Tread Width	96	96	96	96	96	96	96	96
E – Min. – Max.	114 – 117	114 – 117	114 – 117	114 – 117	118 – 121	118 – 121	120 – 123	120 – 123
F – Min. – Max.	18 – 21	18 – 21	18 – 21	18 – 21	22 – 25	22 – 25	22 – 25	22 – 25
G – Min. – Max.	12 – 27	12 – 27	12 – 27	12 – 27	12 – 27	12 – 27	12 – 27	12 – 27
H – Discharge Length	36	36	36	36	36	36	36	36
I – Cab to Axle Min.	*90	*101	*125 / **103	*147 / **127	*125 / **106	**130	**130	**164
J – Cab to Frame Min.	*122	*134	*158 / **158	*180 / **180	*158 / **158	**180	**180	**226
Hopper Size	84x132	84x144	84x168	84x192	87x168	87x192	96x192	96x240
Bottom Augers								
- tube	6 5/8	6 5/8	8 5/8	8 5/8	8 5/8	8 5/8	8 5/8	10 3/4
- flighting	1/2 & 5/8	1/2 & 5/8	1/2 & 5/8	1/2 & 5/8	1/2 & 5/8	1/2 & 5/8	1/2 & 5/8	3/4
- diameter	24	24	24	24	30	30	30	30
Top Augers								
- tube	5	5	6 5/8	6 5/8	6 5/8	6 5/8	6 5/8	8 5/8
- flighting	3/8	3/8	3/8	3/8	3/8	3/8	3/8	1/2
- diameter	24	24	24	24	28	28	28	30
Shaft Diameter								
- drive bottom	3 7/16	3 7/16	3 15/16	3 15/16	3 15/16	3 15/16	3 15/16	3 15/16
- drive top	3	3	3	3	3	3	3 7/16	3 7/16
Bearings Drive	SFCW	SFCW	SFCW	SFCW	SFCW	SFCW	SFCW	SFCW
Sprockets Drive	S Taper	S Taper	S Taper	S Taper	S Taper	S Taper	S Taper	S Taper
Scale System	4 Point	4 Point	4 Point	4 Point	4 Point	4 Point	4 Point	4 Point
Roller Chains	80-120	80-120	100-140	100-140	100-160	100-160	100-160	120 – 160
Approx. Weight (lbs.)	10,900	11,700	12,700	13,800	16,500	19,400	20,200	24,500
Mix. Capacity (cu. ft.)	310	350	440	500	550	625	750	900

\*single axle \*\*double axle

Unless otherwise indicated, all dimensions are in inches with standard equipment installed.

Specifications subject to change without notice.

Certain features shown may be optional.



### ALL “P Series” MODELS

Hopper Bottom – (thickness)	1/4 double
Hopper Ends - bottom	1/4
- top	10 gauge
Hopper Sides - bottom	1/4
- top	10 gauge